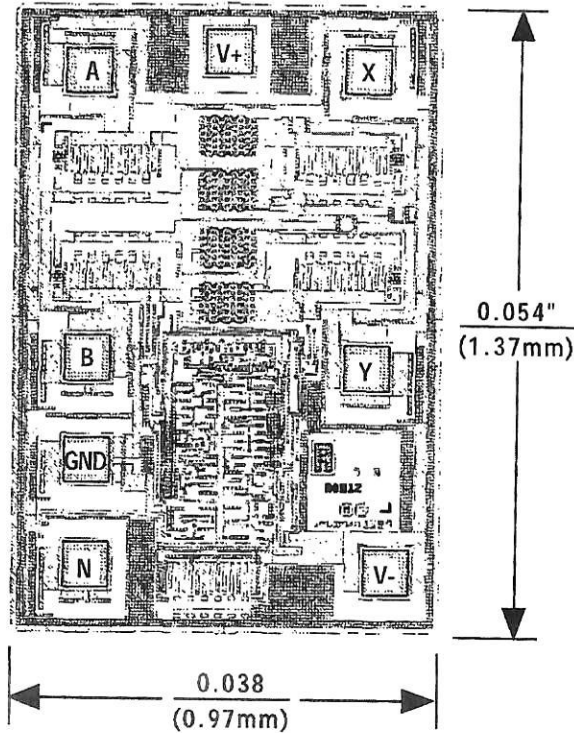




Sierra Components, Inc.

2222 Park Place, 3-E • Minden, Nevada 89423

Phone: 775.783.4940 Fax: 775.783.4947



APPROVED BY: MG

DIE SIZE: 54 x 38 Mils

DATE: 8/19/21

MFG: Maxim

THICKNESS:

P/N: MAX4528C/D